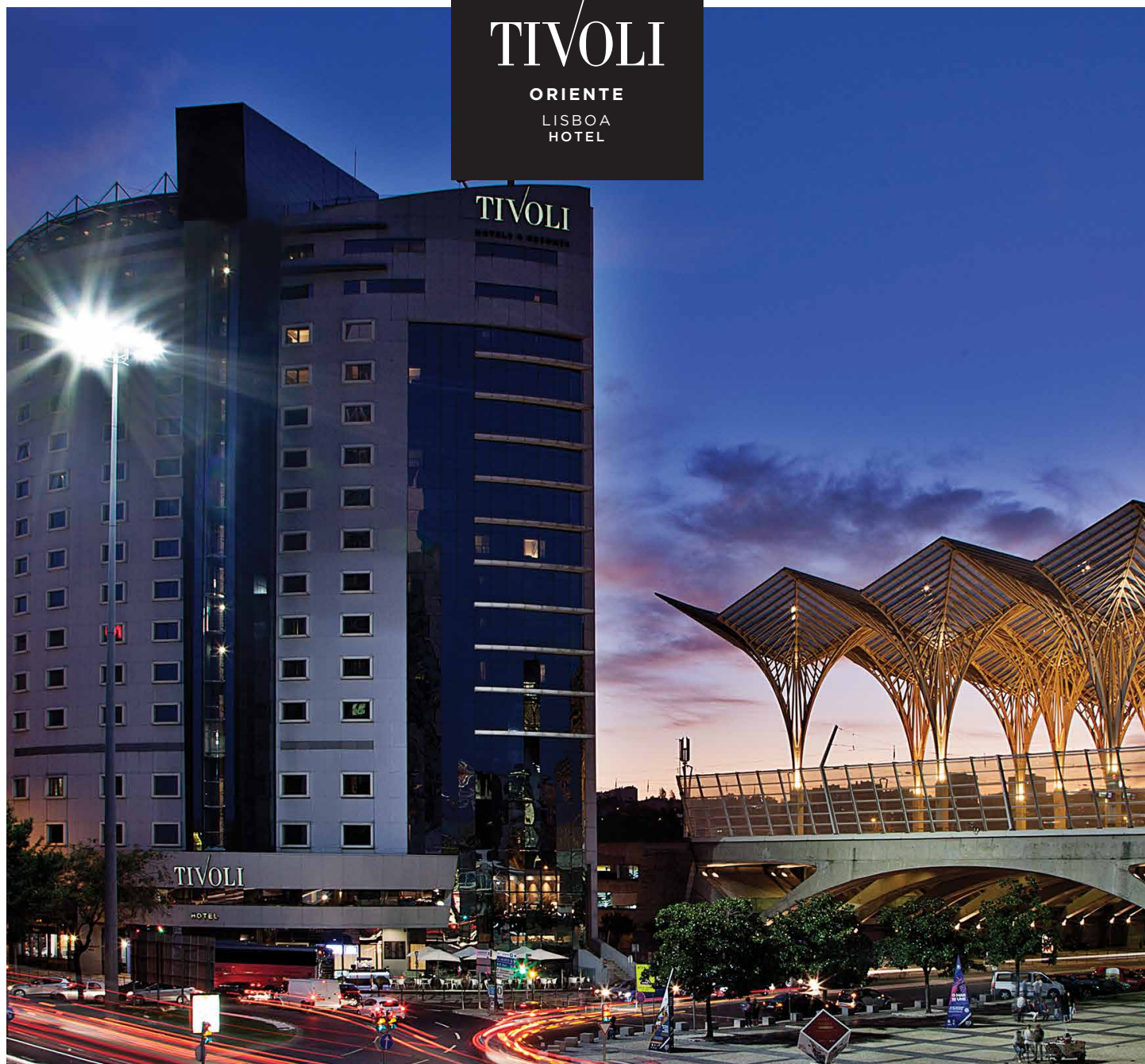


TIVOLI

ORIENTE
LISBOA
HOTEL



Where convenience and comfort meet urban sophistication.

Stylish upmarket accommodation checking all the boxes for convenient and easeful stays in Lisbon's new downtown.

Tivoli Oriente

Av. Dom João II - Nº27
Parque das Nações, 1990-083 Lisboa - Portugal
T. +351 218 915 100 · F. +351 218 915 345
Reservations.portugal@tivolihotels.com
tivolihotels.com

DISCOVERY 



/ Tivoli Oriente

Tivoli Oriente Lisboa Hotel is an upscale modern retreat where sophisticated leisure and ultimate convenience infuses adventure in Lisbon. Unforgettable stays start with a privileged location in Parque das Nações, the city's gleaming hub for urban renewal, just five minutes from the airport and near the highway for easy access to Sintra and Cascais.

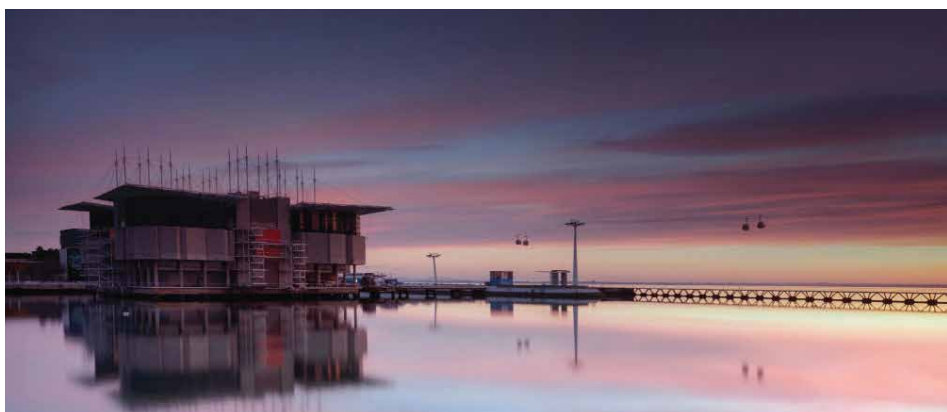
Whether checking in for work or fun, Tivoli Oriente's cosmopolitan offerings promise pampered and easeful awakenings. Take the elevator up to Sky Bar, where enticing cocktails and sushi meet 360-degree city and river views. Loosen up in the heated indoor swimming pool, Jacuzzi or freshly refurbished fitness centre. Start days with a buffet breakfast on a terrace above the city or enjoy satiating dinners at our signature steakhouse. Beautifully designed facilities and a range of options for relaxation will tempt you to linger even longer in Lisbon.



/ Location

Tivoli Oriente Lisboa Hotel is located in Lisbon's riverfront district Parque das Nações just a six-minute drive from Lisbon Airport. Parque das Nações was the home of Expo '98 and today is known for Europe's largest bridge, second-largest aquarium and many more highlights.

GPS: N 38° 45' 59,67", O 9° 05' 52,76"



/ Accommodation

279 rooms and suites with double or single beds including:

2 Executive Suite – River View

6 Junior Suite – River View

8 Junior Suite – Avenue View

1 Junior Suite – City View

2 Superior Family Room – River View

6 Superior Family Room – Avenue View

58 Superior Room – River View

80 Superior Room – Avenue View

116 Superior Room – City View

1 Superior Room – City View specially adapted for disabled guests

/ Executive Suite

Stretch out in the unlimited freedom of an Executive Suite, tucked onto the top floors of the hotel. Clean contemporary furnishings emphasize exhilarating views across Lisbon and the mighty Tagus. Stay at the height of comfort and flexibility with separate living and dining areas, and two fully equipped bathrooms including a spacious shower and bathtub.



/ Junior Suite – River View

Rise and shine against the Tagus sipping espresso. Move gently through the day with a separate living area, two cosy sofas and a fully equipped bathroom. Contemporary comforts, from an LCD TV with video on demand, high-speed WiFi and a double bed dressed in soft threads make for a homey hideaway atop the city.



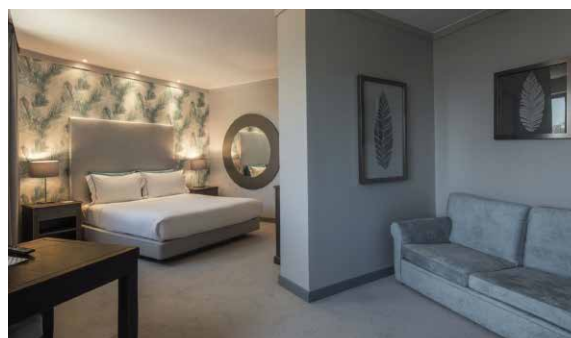
/ Junior Suite – Avenue View

Suite living enriches with an expansive layout and vistas of Parque das Nações' iconic main avenue. Located on the middle floors, these spaces offer quick and easy access to relaxing facilities such as the Jacuzzi and pool. Slip into the Turkish bath or sweat it out at the gym. Return to superb in-room amenities and contemporary bliss.



/ Junior Suite – City View

Suite delight is defined by floor-to-ceiling windows, letting in warm light against invigorating views of Lisbon's pastel skyline. Take advantage of the sauna, Turkish bath and fitness centre just steps away on the same floor. Deluxe comforts span a separate living room and bedroom, with a Nespresso machine, video on demand and complimentary WiFi to make life easy.



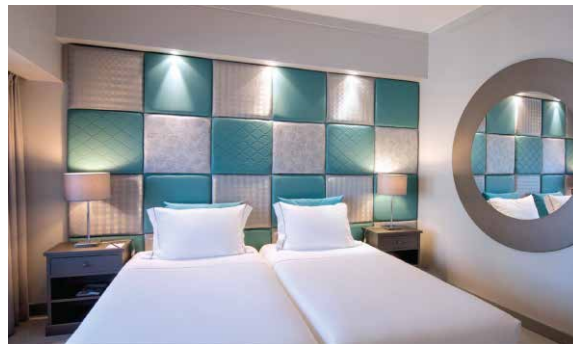
/ Superior Family Room River View

Combining generous space and vivid colour motifs, these rooms are perfect to put families at ease. Relax against Tagus river views, cradling espresso and reliving your best holiday moments. Dip into the mini bar or order an in-room feast. Cuddle up on the couch watching mesmerising Portuguese sunsets and slip into bed for fantastic sleeps



/ Superior Family Room Avenue View

These family rooms offer everything needed for bold travel moments and meaningful quality time. Snuggle up during evenings with 24-hour in-room dining and video on demand. Spread out in a flexible space with a work area and spacious bathroom. Daytimes are energised thanks to superlative slumbers overlooking the tranquillity of Parque das Nações' main avenue.



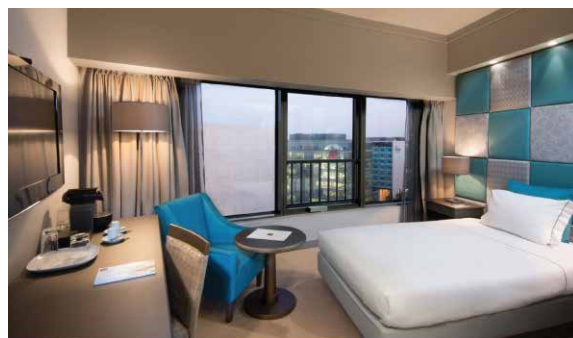
/ Superior Room River View

Fall asleep against sparkling sunsets and showy views of the Tagus River. Open your eyes to elegant contemporary décor and famous Lisbon sunlight flooding in. These Superior Rooms are an urban oasis for enjoying as you please. Take advantage of a Nespresso machine, high-speed WiFi and video on demand breathing sophistication into a smooth coastal setup.



/ Superior Room Avenue View

Whether in the mood for work or leisure, these spread-out rooms are designed with your utmost desires in mind. Recline against views of Parque das Nações' main avenue, muted tones, hints of vibrant colour and abundant natural light. Modern creature comforts from video on demand to high-speed WiFi will keep you entertained and effortlessly connected.



/ Superior Room City View

Welcome to your slice of urban paradise. Convenience is key with excellent amenities from video on demand to your choice of double or single beds. Keep up with Lisbon's uplifting tempo from your window. Head to the Jacuzzi, swimming pool or sauna with ease. Enjoy infinite peace and quiet in an urban retreat right in the action.



/ Health Centre

Unwind, relax and indulge with our comprehensive Health Centre facilities at your disposal. Swim a few laps in the heated indoor pool or work up a sweat in a state-of-the-art equipment gym. A jacuzzi, sauna and steam room are also available to help you decompress afterwards with a terrace boasting inspiring views of the iconic Oriente Train Station.

Opening hours: 7:00 - 22:00



/ Room Types Summary

Type of Room	Nº		Type of Room	Floors
Superior Room City View	116	18m² to 20m²	70 rooms with double bed 45 rooms with single beds 1 rooms with single bed	2º - 15º
Superior Room Avenue View	80	18m² to 20m²	57 rooms with double bed 16 rooms with single beds 7 rooms with single bed	2º - 9º
Superior Room River View	58	18m² to 20m²	22 rooms with single beds 6 rooms with single bed	10º - 15º
Superior Family Room Avenue View	6	20m²	6 rooms with single beds	4º - 9º
Superior Family Room River View	2	20m²	2 rooms with single beds	10º; 11º
Junior Suite City View	1	40m²	1 suite with double bed	3º
Junior Suite Avenue View	8	40m²	7 suites with double bed 1 suite with single bed	4º - 9º 2º
Junior Suite River View	6	40m²	6 suites with double bed	10º - 15º
Executive Suite River View	2	60m²	2 suites with double bed	14º; 15º

/ Leisure Services

- Ticket and excursion reservations (via Experience Team)
- Fitness centre
- Heated indoor swimming pool
- Jacuzzi
- Sauna
- Steam Room

/ Hotel Services

- 24-hour room service
- Complimentary WiFi
- Experience Team available 24 hours
- Paid parking
- Laundry service
- Car rentals
- Children's activity kits
- Safety deposit box at the Reception;
- Pay TV
- Iron and ironing board (on request)

/ Rooms Equipped with

- Minibar
- Individual air conditioning
- Individual safe

/ Leisure, Entertainment and Sports

- Lisbon Oceanarium – 15-min. walk
- Lisbon Casino – 5-min. walk
- Vasco da Gama Shopping Centre – 4-min. walk
- Cinema (in Vasco da Gama Shopping Centre)
- São Jorge Castle – 26-min. bus ride
- MEO Arena – 5 min. walk
- Beach – 30 min.
- Metro station Oriente – 1-min. walk
- Golf course – 15-min. drive
- FIL (Lisbon Exhibition and Congress Centre) – 5-min. walk

/ Business Center Services

- 24 hours
- 2 work stations
- Printer and scanner available
- Portuguese and foreign newspapers
- Complimentary WiFi
- Complimentary ADSL line

/ Restaurants & Bars

T-BONE

Perfectly grilled delight by the forkful.

T-Bone Restaurant is one of the latest additions to the iconic Parque das Nações. Discover our newly renovated steakhouse, covered in leafy foliage for relaxing garden vibes atop the city. Dry-aged beef seal in succulent flavour and sirloin cuts take centre stage, but pasta, salads, fish and vegan options are also available to tempt eclectic taste buds.

Buffet breakfast: 6:30 - 10:30

Lunch: 12:00 - 15:00

Dinner: 19:00 - 23:00

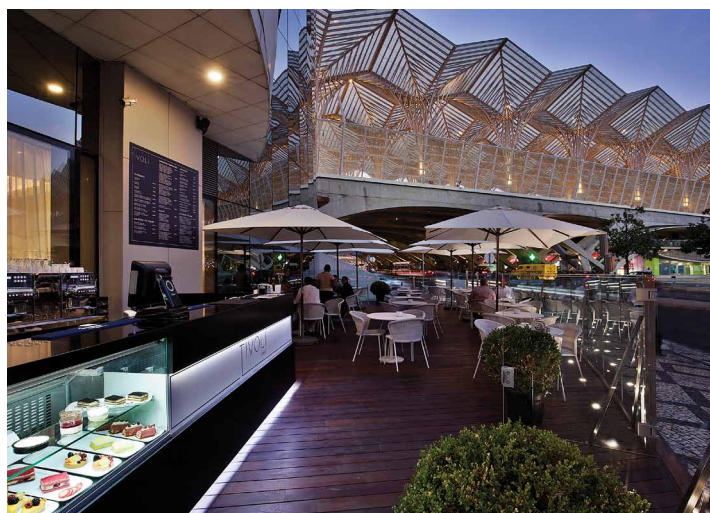


Tivoli Café

Fill up on varied bites and inspiring views of Parque das Nações.

Overlooking Oriente Station and Parque das Nações, the new Tivoli Café is the ideal sport for starting days in blissful relaxation. Sit back outside on the terrace fuelling up breakfast, lunch and dinner options. Finish off a fresh scrumptious salad, sandwich or wrap with homemade dessert or ice cream and an assortment of soothing drinks.

Opening hours: 07:30 - 21:00

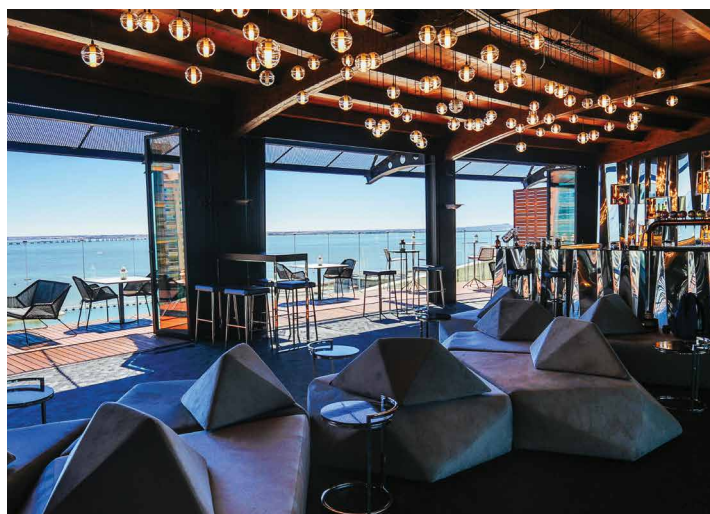


SKYBAR

The SkyBar Oriente is the new rooftop bar in town promising to make your afternoons, sunsets and summer nights memorable. Amaze yourself with the stunning views over the city and the Tagus river, the live Dj performance and an original menu of sushi and snacks to go with our refreshing cocktails.

Open all year.

Opening from: 17:00 to 01:00



/T/Experiences

Live a series of genuine experiences, truly dedicated to our guests and their tastes, time, expectations and travel motivations. Our T/EXPERIENCES are designed to bring out the best, most original and authentic moments each destination has to offer. Relish a succulent cut of T-Bone, and learn about its salt and maturation through a decadent tasting affair, or learn to craft sushi against excellent rooftop views of the city.



T-BONE au Salt

Savour the best “Mirandês” T-Bone you’ll find in Lisbon at T Bone gazing over the city. In an experience for up to four people, sit down for the most perfect cut of tender sirloin meat in harmony with palate-enriching salts of your choice.

Your preference of starter and dessert accompanies this unforgettably delicious main with a selection of excellent Portuguese wines to revel in Tivoli luxury.



Sushi Making Class

Become a true expert in the art of sushi. In a captivating and tasty experience, complete with fantastic views from atop the Sky Bar, put your hands to work in an exclusive workshop with our sushi chef.

Get to know about the history of this famous dish and a few fascinating stories from Japanese culture, while learning to shape your own rolls. Start with cooking the rice to choosing the finest fish with a sake toast for your ending enjoyment.



/ Conferences and meetings at Tivoli Oriente

Spanning a total area of 1,200 square metres, Tivoli Oriente has plentiful space for hosting your next conference, meeting or event. Choose between 11 highly functional rooms, ranging from 20 to 348 square metres in size, equipped with the latest audio visual and lighting equipment for bringing excellent arrangements to life. Let our experienced event staff remove the hassle and fuss out of planning for you.

Support Infrastructures

- 11 rooms equipped with the latest technology
- Reception facilities for groups
- Banqueting room with capacity up to 200 people

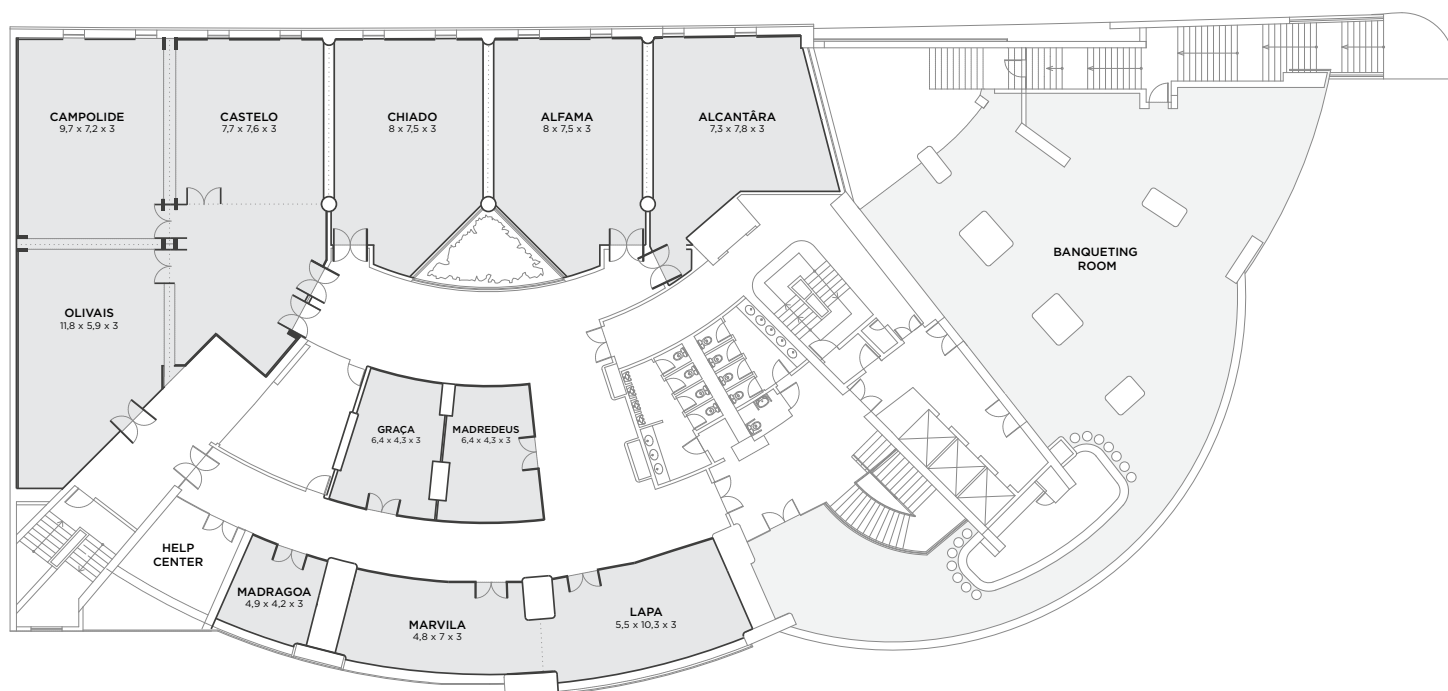
Services Available

- Wifi in public areas, meeting rooms and rooms
- Business Centre with complimentary ADSL line



/ Meeting Rooms Plan

Rooms	C x A x L	Area	Banquet	Cocktails	School	Theatre	U Table	Cabaret
Alcântara	7,33 x 7,8 x 3	68,3 m ²	40	-	27	40	24	20
Alfama	8 x 7,5 x 3	73,1 m ²	50	-	33	45	24	25
Chiado	8 x 7,5 x 3	73,1 m ²	50	-	33	45	24	25
Castelo	7,7 x 7,6 x 3	58 m ²	30	-	24	40	24	15
Campolide	9,7 x 7,2 x 3	68 m ²	40	-	33	50	24	20
Olivais	11,8 x 5,9 x 3	81,5 m ²	40	-	34	50	18	20
Graça	6,4 x 4,3 x 3	27 m ²	-	-	10	16	12	-
Madredeus	6,4 x 4,3 x 3	27 m ²	-	-	12	16	12	-
Madragoa	4,91 x 4,2 x 3	20 m ²	10	-	-	12	9	5
Marvila	4,8 x 7 x 3	41,5 m ²	30	-	24	30	22	15
Lapa	5,5 x 10,3 x 3	51,4 m ²	30	-	30	36	23	15
Lisboa Antiga*	-	348 m ²	280	550	210	400	-	140
Oriente**	-	250 m ²	160	300	130	230	45	130



/ Hotel Policies

Check-in and Early check-in

Check-in is from 14:00 onwards. Early check-in is available, subject to a surcharge: before 10:00 for the previous night's full room rate or before 14:00 for a surcharge equivalent to 50% of the previous night's room rate.

Check-out and Late check-out

Check-out is until 12:00. Late check-out is available subject to a surcharge: For check-in between 12:00 and 16:00, the equivalent of 50% of the following night's room rate will be charged. For check-out after 16:00, that day's full room rate will be charged.

Credit Cards

Tivoli Oriente accepts the following credit cards: American Express, Visa, MasterCard, Diners and JCB.

Guarantee and Confirmation of Reservation

We require a credit card or prior deposit for the total amount of the stay

Cancellation Policy

For cancellations made 24 hours or less before check-in and no-shows, the reservation will be subject to a one-night penalty charged to the credit card provided. General policies may vary according to reservation conditions and do not apply to group reservations. For reservations of 10 or more rooms, private policies apply.

Tivoli Oriente

Av.Dom João II - N°27

Parque das Nações, 1990-083 Lisboa - Portugal T. +351 218 915 100 · F. +351 218 915 345

Reservations.portugal@tivolihotels.com

tivolihotels.com